

FULTON BUILDING FOR LEASE

10466 FULTON DRIVE, ACHESON ALBERTA | FOR LEASE



PROPERTY DESCRIPTION

Flexible industrial space for lease in Acheson, Alberta. This is very well maintained building with flexible size options and terms, each unit contains 2 overhead doors, and sumps. This building offers secure graveled yard and ample parking in the front.

PROPERTY DETAILS

Address:	10466 Fulton Drive, Acheson Alberta	Total Space Available:	15,608 SF
Ceiling Height:	20' Clear	Max Contiguous Space:	13,531 SF
Loading:	Grade (12' x 16')	Min Contiguous Space:	1367 SF
Sumps:	Yes		
Heating:	Forced Air		
Power:	200 amp 3 phase (TBV)		A: 2077 SF
Yard:	Graveled & Fenced		C: 2121 SF
Zoning:	MI		D: 1367 (office only)
Available:	Immediately	Space Available:	E: 2476 SF
Lease Rate:	Starting at \$11.50 PSF		F: 2508 SF
Op Costs:	\$4.55		G: 2540 SF
			H: 2519 SF



RE/MAX EXCELLENCE
COMMERCIAL DIVISION

Dean Drysdale

Associate

E: deandrysdale@gmail.com

D: 780.953.4585

#201, 5607 199 Street Edmonton, AB T6M 0M8

commercialyeg.ca

#1 RE/MAX Commercial Team Worldwide 2017 - 2019*

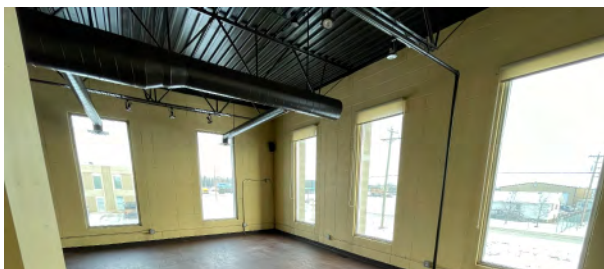
O: 780.429.1200

The information contained herein was obtained from sources deemed to be reliable and is believed to be true; it has not been verified and as such, cannot be warranted nor form a part of any future contract. All measurements should be independently verified by the Purchaser/Tenant. *based on commercial commissions 2017 & 2018

FLOOR PLAN

2530 SF Leased L	2530 SF Leased K	5060 SF Vacant I-J	2519 SF Leased H	2540 SF Leased G	2508 SF Leased F	2476 SF Leased E	1367 SF Leased D
							2121 SF Leased C
							2121 SF Leased B
							2077 SF Leased A

ADDITIONAL PHOTOS



RE/MAX EXCELLENCE
COMMERCIAL DIVISION

Dean Drysdale
Associate
E: deandrysdale@gmail.com
D: 780.953.4585

#201, 5607 199 Street Edmonton, AB T6M 0M8



commercialyeg.ca

#1 RE/MAX Commercial Team Worldwide 2017 - 2019*

O:780.429.1200

The information contained herein was obtained from sources deemed to be reliable and is believed to be true; it has not been verified and as such, cannot be warranted nor form a part of any future contract. All measurements should be independently verified by the Purchaser/Tenant. *based on commercial commissions 2017 & 2018