

Eastview Industrial Units For Lease

6940 34 Street NW Edmonton, AB | FOR Lease



PROPERTY Details

Address:	6940 34 Street NW Edmonton, AB
Zoning:	IB
Loading:	Dock and Grade
Ceiling Height:	22'
Construction:	Concrete block
Power:	400 amp
Sumps:	Yes
Lighting:	T5
Size:	Main level: 17,363 SF +/- Second level: 1,940 SF +/- Total: 19,303
Rate:	Starting at \$7.50 PSF
Op Costs:	\$4.45



RE/MAX EXCELLENCE
COMMERCIAL DIVISION

Dean Drysdale
Associate
E: deandrysdale@gmail.com
D: 780.953.4585

#201, 5607 199 Street Edmonton, AB T6M 0M8



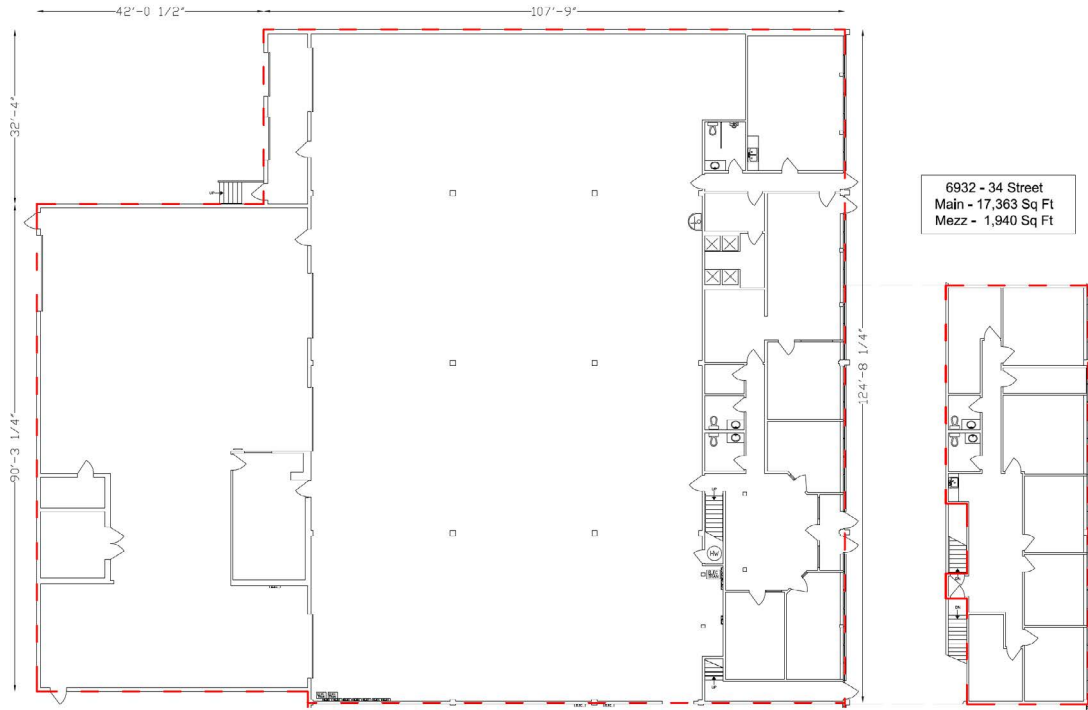
commercialyeg.ca

#1 RE/MAX Commercial Team Worldwide 2017 & 2018*

O:780.429.1200

The information contained herein was obtained from sources deemed to be reliable and is believed to be true; it has not been verified and as such, cannot be warranted nor form a part of any future contract. All measurements should be independently verified by the Purchaser/Tenant. *based on commercial commissions 2017 & 2018

Floor Plan



Property Map



RE/MAX
COMMERCIAL[®]
RE/MAX EXCELLENCE
COMMERCIAL DIVISION

Dean Drysdale
Associate
E: deandrysdale@gmail.com
D: 780.953.4585



#201, 5607 199 Street Edmonton, AB T6M 0M8

commercialyeg.ca

#1 RE/MAX Commercial Team Worldwide 2017 & 2018*

O:780.429.1200

The information contained herein was obtained from sources deemed to be reliable and is believed to be true; it has not been verified and as such, cannot be warranted nor form a part of any future contract. All measurements should be independently verified by the Purchaser/Tenant. *based on commercial commissions 2017 & 2018