

# INDUSTRIAL LOT IN WESTLOCK

9408 100 STREET WESTLOCK, AB | FOR SALE



## PROPERTY HIGHLIGHTS

- One Half Acre with chain link fencing located on Hwy 18. Excellent frontage of 105' x 220'.
- This property is a well compacted gravel site and is ready for development.
- Sellers Rights apply.
- Also note that the 6,400 ST building bordering the west side of the property is for sale at \$599,000.

## PROPERTY DETAILS

Address:	9408 100 St Westlock, AB
Legal Description:	Lot 2; Block 5; Plan 7922772
Zoning:	IL - Industrial Light District
Sale Price:	\$104,900
Property Taxes:	\$1,928
Lot Size:	0.48 Acres +/-



RE/MAX EXCELLENCE  
COMMERCIAL DIVISION

Judith Rimmer  
Associate

E: [jrimmer@commercialyeg.ca](mailto:jrimmer@commercialyeg.ca)  
D: 780.405.9333

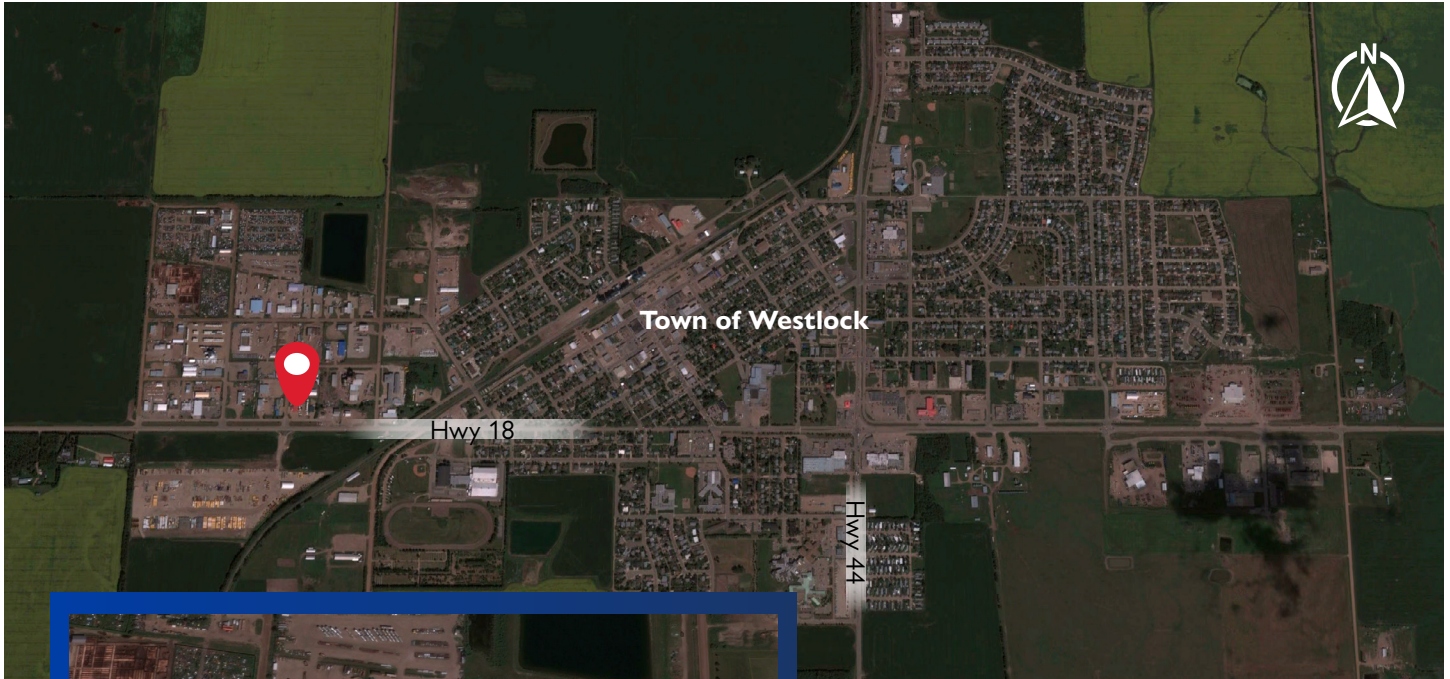
[commercialyeg.ca](http://commercialyeg.ca)

#1 RE/MAX Commercial Team Worldwide 2017, 2018, 2019\*

O:780.429.1200

The information contained herein was obtained from sources deemed to be reliable and is believed to be true; it has not been verified and as such, cannot be warranted nor form a part of any future contract. All measurements should be independently verified by the Purchaser/Tenant.

# THE AREA



## DEMOGRAPHICS



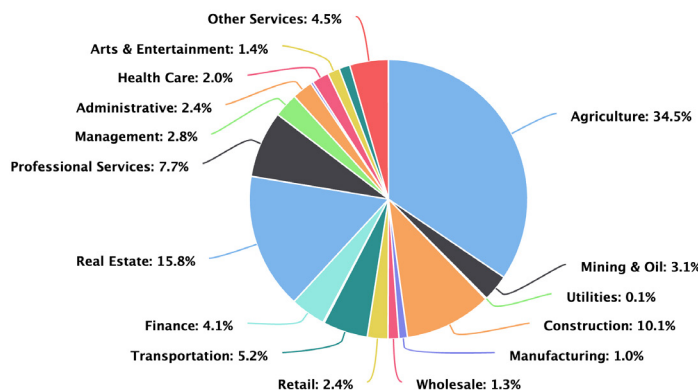
Population (2016)  
Westlock: 4,678  
Westlock County, MD: 7,220



Average Household Income (2015)  
Westlock: \$78,591  
Westlock County, MD: \$99,594

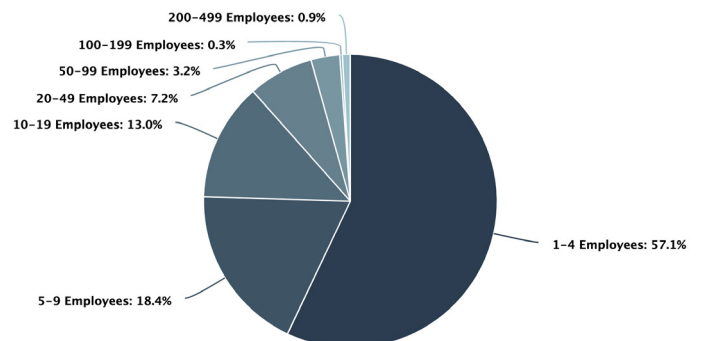
## Business Industries

Source: Westlock.ca, data from 2016



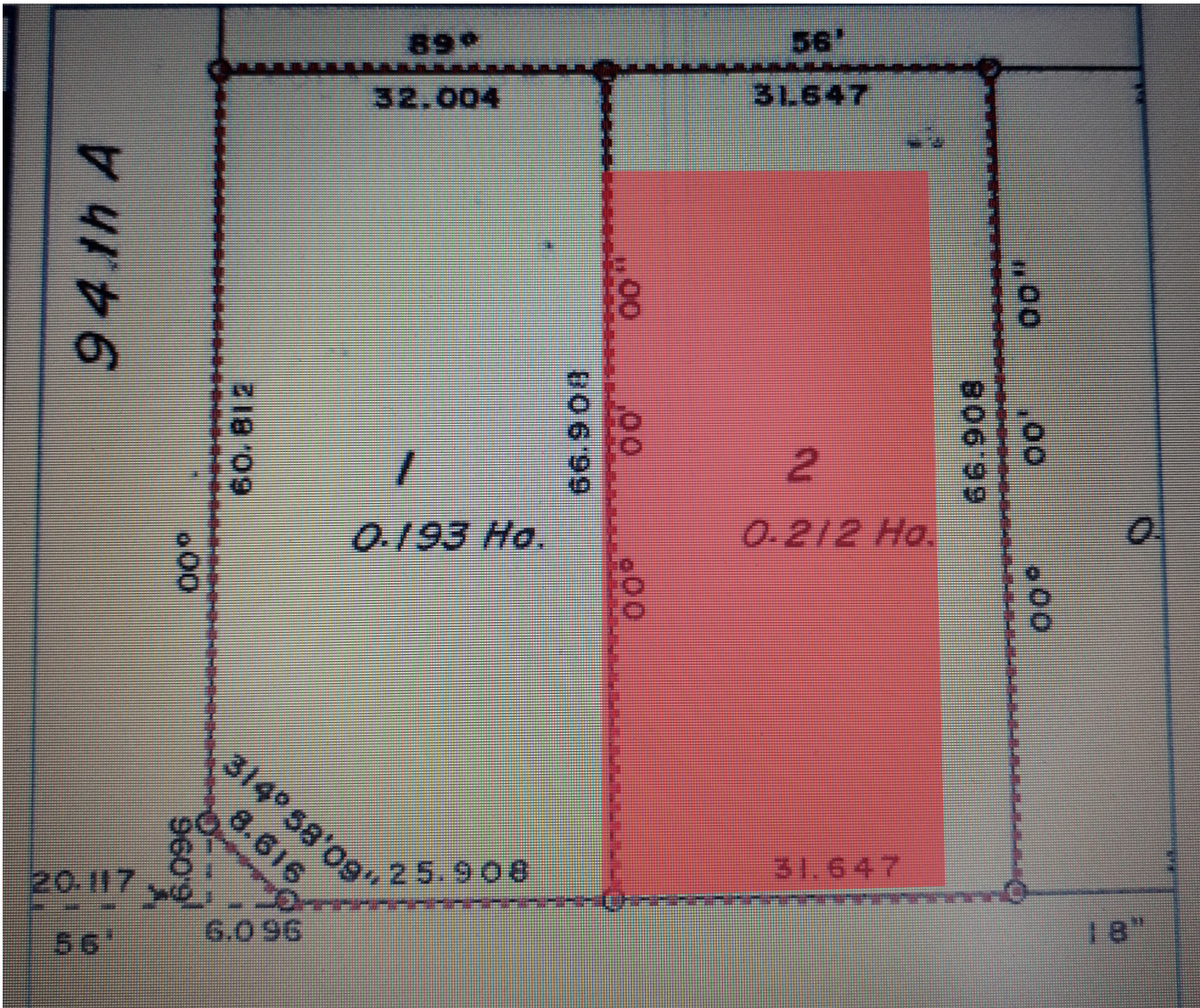
## Business Size

Source: Westlock.ca, data from 2016





SITEPLAN



**RE/MAX**  
COMMERCIAL

RE/MAX EXCELLENCE  
COMMERCIAL DIVISION

Judith Rimmer  
Associate  
E: [jrimmer@commercialyeg.ca](mailto:jrimmer@commercialyeg.ca)  
D: 780.405.9333

#201, 5607 199 Street Edmonton, AB T6M 0M8



\*based on commercial commissions 2017 & 2018